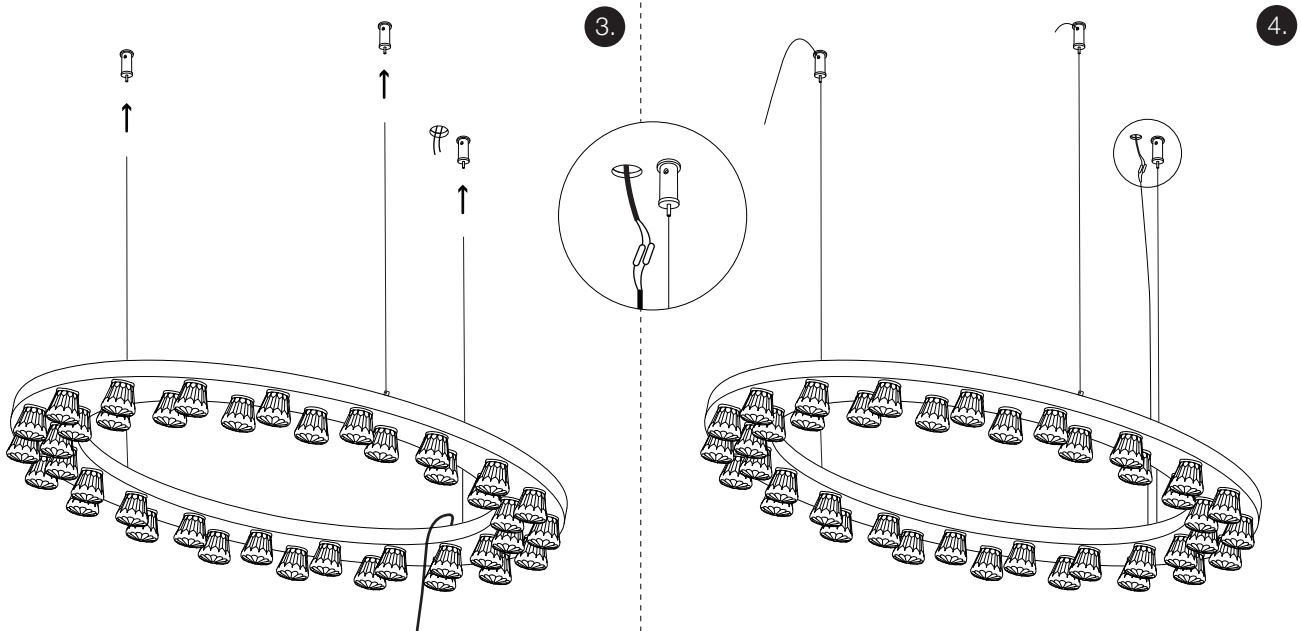


Mark and drill holes in the ceiling based on lamp measurements. Attach JSPR suspension cable fasteners near the house electricity wire.

NOTE: Installation and use of our ceiling suspension cable fasteners is enclosed in this document.

Carefully unwrap the lamp. Locate the 3 cable fasteners on the top of the lamp. Uncoil the provided suspension cables and guide them through the top of each fastener (A). Fasten the cable using a hex key (B).

NOTE: Make sure to tighten the fasteners very well to avoid any damage. Trim any excess cables.



Guide the lamp's suspension cables through the pre-mounted ceiling fasteners until desired length is achieved.

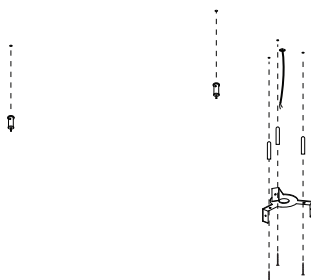
Trim any excess cables.

Shorten the electric wire and connect it to the house wire. Tuck away any excess wires.

CONTACT

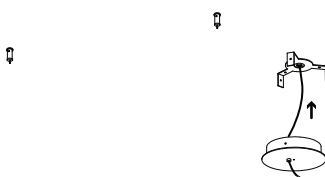
**JSPR**  
T +31 (0) 402692111  
INFO@JSPR.EU  
WWW.JSPR.EU

1.



Mark holes in the ceiling based on the lamp measurements and canopy. Attach canopy base plate using screws and plugs (by client).

2.



Attach two suspension cable fasteners. Pull through the house electric wire through the canopy cover.

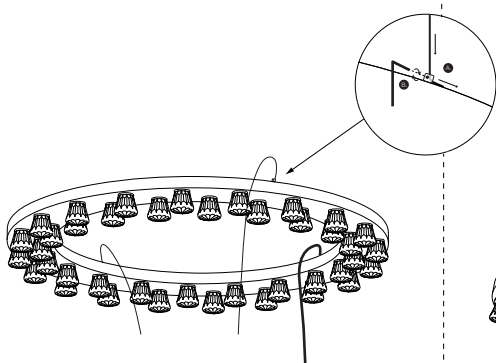
NOTE: detailed information on installing and using our suspension cable fasteners is inclosed in the next pages.

3.



Fix the cover plate to the pre-mounted canopy base with three provided screws.

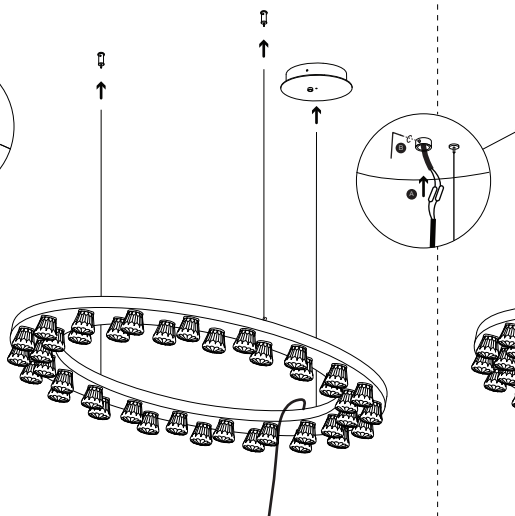
4.



Carefully unwrap the lamp. Locate the 3 cable fasteners on the top of the lamp. Uncoil provided suspension cables and guide them through the top of each fastener (A). Fasten the cable using a hex key (B).

NOTE: Make sure to tighten the fasteners very well to avoid any damage. Trim any excess cables.

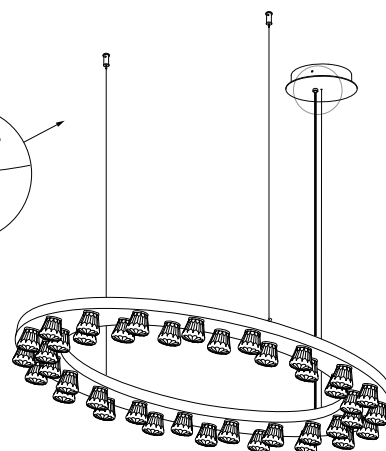
5.



Once the suspension cables are securely fastened to the lamp, guide the other end of each cable through the cable fasteners on the canopy and ceiling (both share the same mechanism).

Trim any excess suspension cables.

6.

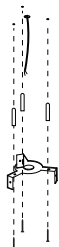


Connect the fixtures electric wire to the house electric wire coming from the canopy. Use splices and heat shrink. Tuck away the connection point and any excess wire in the canopy (A) and fix the wire position using a hex key (B). Be gentle not to pierce the electric wire.

CONTACT

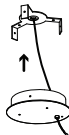
**JSPR**  
T +31 (0) 402692111  
INFO@JSPR.EU  
WWW.JSPR.EU

1.



Mark holes in the ceiling near the house electricity wire, based on the canopy size. Attach canopy base plate using screws and plugs (by client) and pull through the electricity wire.

2.



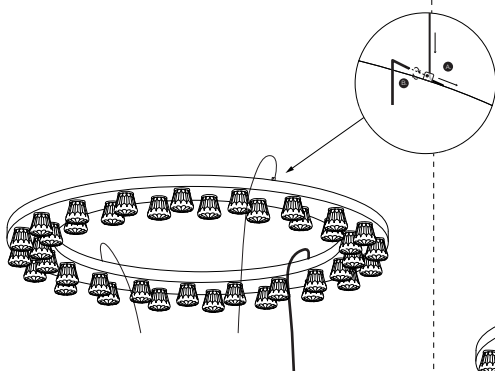
Pull the house electric wire through the canopy cover. And align it to the base.

3.



Fix the cover plate to the pre-mounted canopy base with three provided screws.

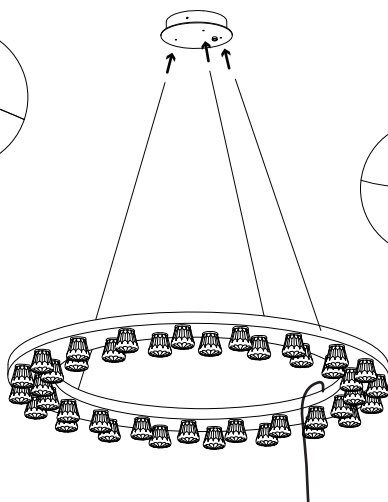
4.



Carefully unwrap the lamp. Locate the 3 cable fasteners on the top of the lamp. Uncoil provided suspension cables and guide them through the top of each fastener (A). Fasten the cable using a hex key (B).

NOTE: Make sure to tighten the fasteners very well to avoid any damage. Trim any excess cables.

5.

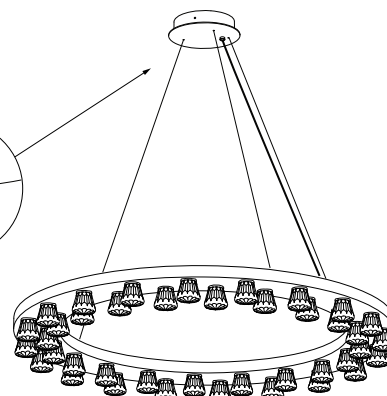


Once the suspension cables are securely fastened to the lamp, guide the other end of each cable through the cable fasteners on the canopy.

Trim any excess suspension cables.

NOTE: Canopy cable fasteners work the same way as our individual ceiling fasteners. The manual for their use is enclosed in this document.

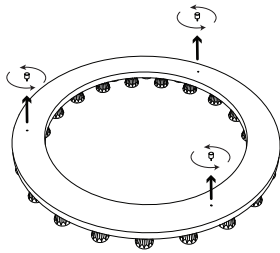
6.



Connect the fixtures electric wire to the house electric wire coming from the canopy. Use splices and heat shrink. Tuck away the connection point and any excess wire in the canopy (A) and fix the wire position using a hex key (B). Be gentle not to pierce the electric wire.

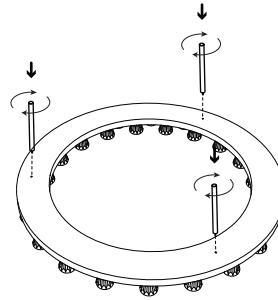
CONTACT

**JSPR**  
T +31 (0) 402692111  
INFO@JSPR.EU  
WWW.JSPR.EU



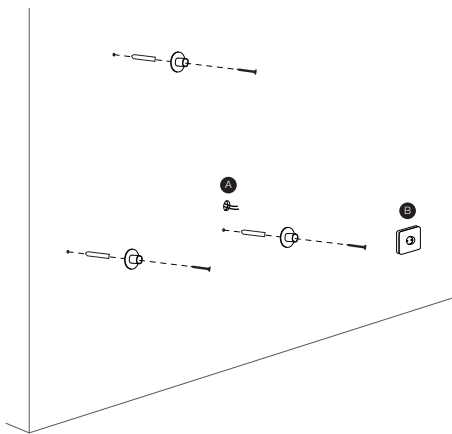
1.

Carefully place the light fixture on a soft surface. Locate the suspension cable fasteners on the light and remove them by unscrewing each one.



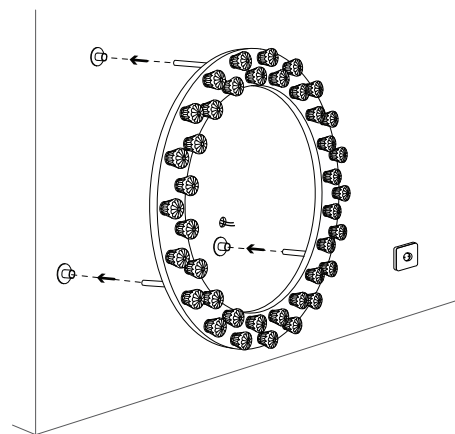
2.

Screw in the wall brackets in the same slots as the cable fasteners were. Fix them tightly to the fixture.



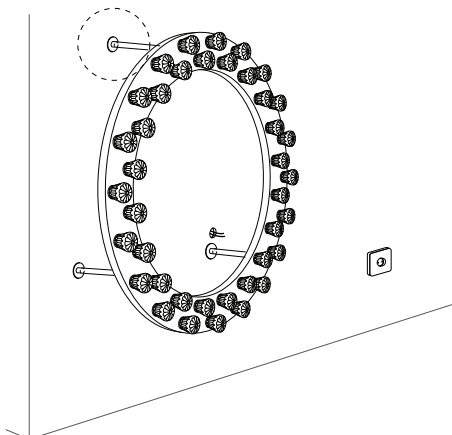
3.

Decide the electric wire usage, hidden or power plug (**A** or **B** options). This will determine the exit of the house electric wire or location to socket. Mark and drill holes in the wall based on lamp measurements. Attach the bracket bases to the wall using dowels and screws (by client).



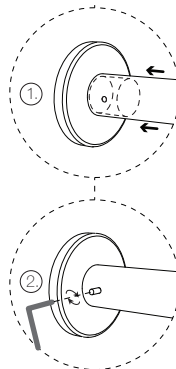
4.

Align the pre assembled light fixture with wall brackets to the bracket bases on the wall.



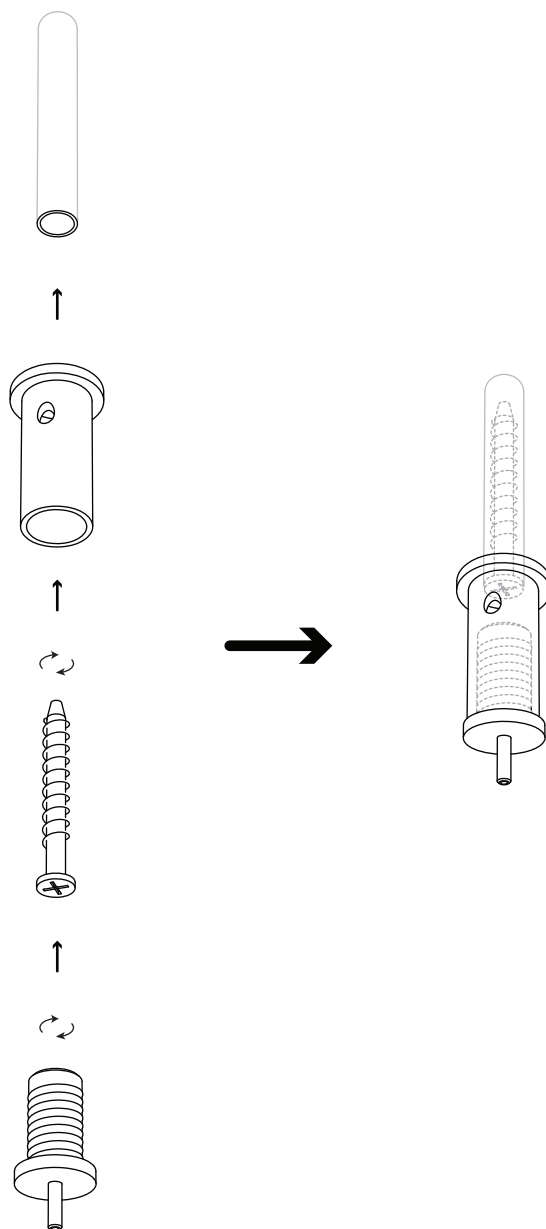
5.

Push the brackets in the bracket bases and secure the brackets to the pre assembled bracket bases using a hexkey through a special slot on the brackets.



6.

Connect the light fixture to the desired power supply. The fixture is ready.

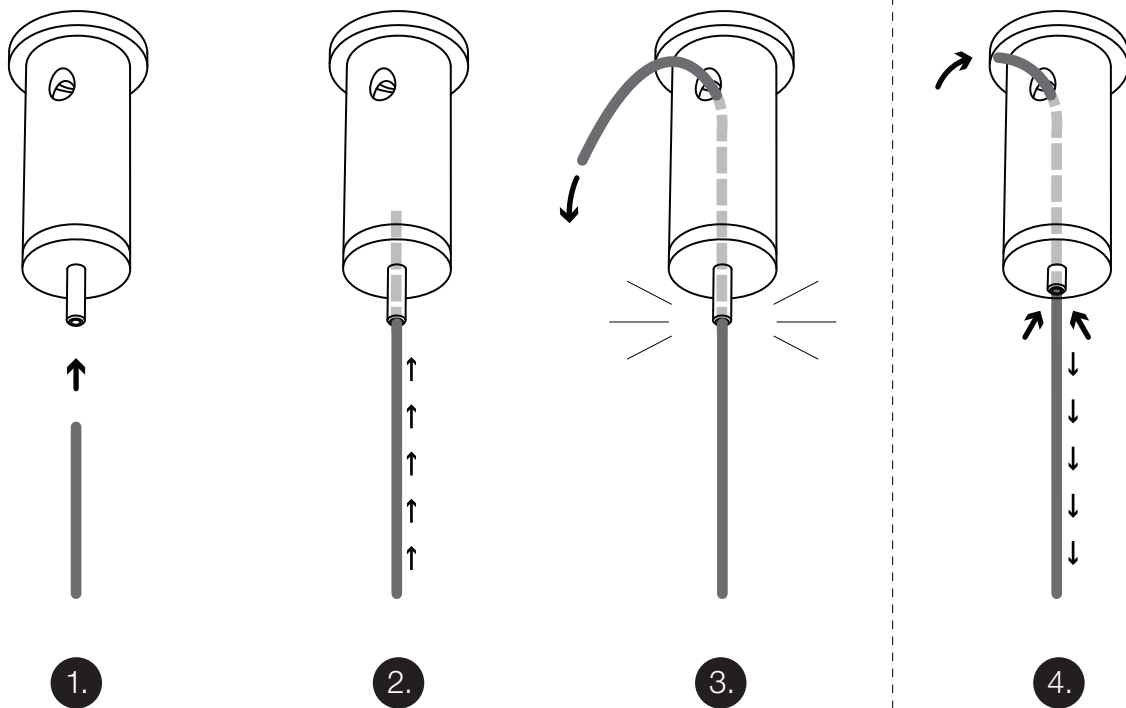


Drill hole in the desired location in the ceiling, place a plug in the hole (dowel and screw by client). Fasten the cover of the cable fastener with a screw by guiding it through the cover into the plug/dowel. Once the cap is fastened screw in the inner part of the cable fastener.

Proceed to the next page of this manual for information on using this cable fastener.

CONTACT

JSPR  
T +31 (0) 402692111  
INFO@JSPR.EU  
WWW.JSPR.EU



## GUIDING THE CABLE (Steps 1. - 3.)

After the cable fasteners are securely attached to the ceiling, guide the support cable through the tiny nozzle (1. & 2. ). Once reached the desired length of the cable let it go or pull the cable downwards and the wall mount will automatically lock (3. ).

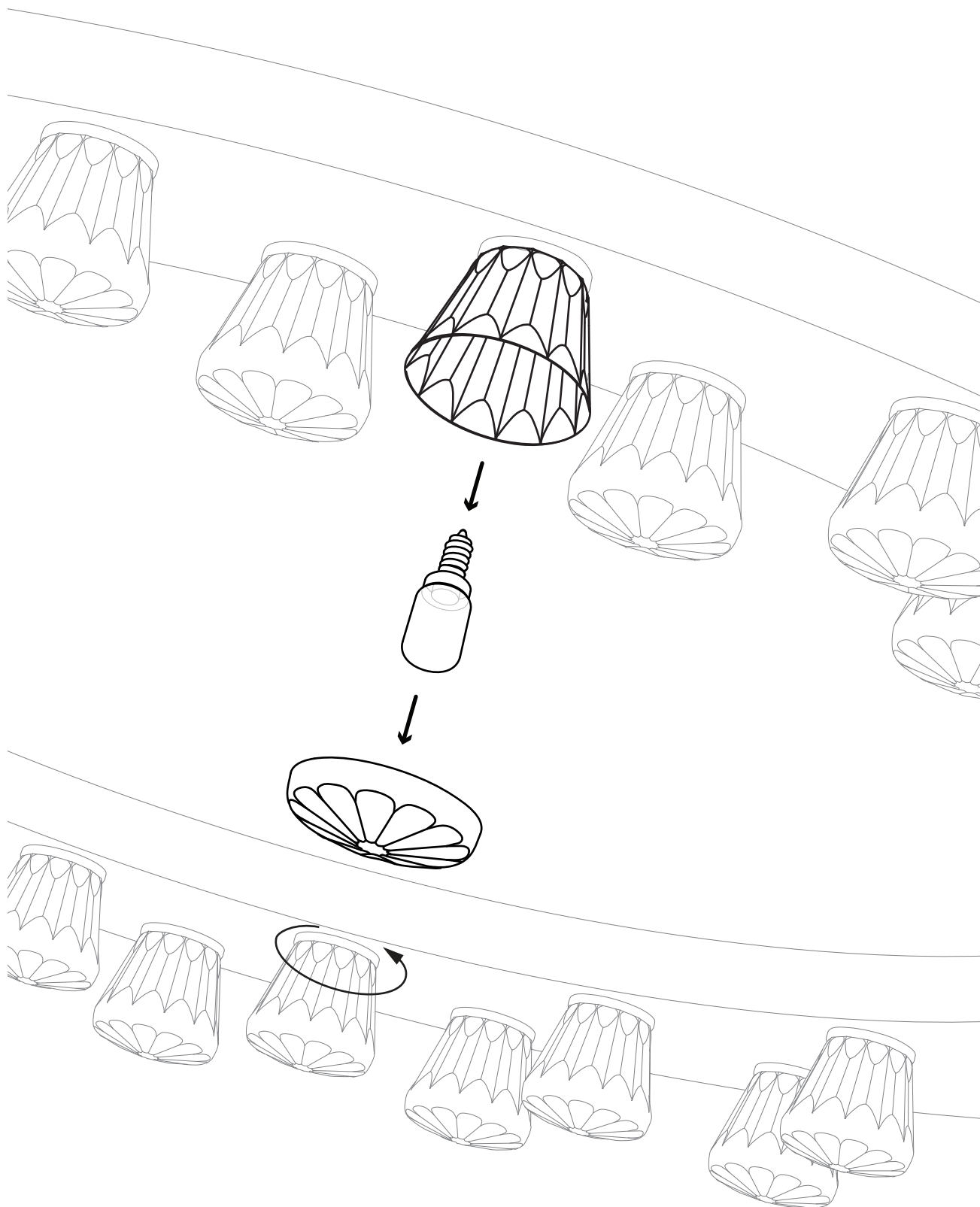
## EXTENDING THE CABLE (Step 4)

To extend the cable, push the little nozzle upwards/inside, the cable will loosen and allow to be pulled out. To fix release the nozzle and the fastener will automatically lock the cable.

After achieving desired length of the lighting fixture trim any excess cables.

## CONTACT

JSPR  
T +31 (0) 402692111  
INFO@JSPR.EU  
WWW.JSPR.EU



Gently unscrew the top cap and replace LED/bulb.

Fitting: E14

CONTACT

**JSPR**  
T +31 (0) 402692111  
INFO@JSPR.EU  
WWW.JSPR.EU